

Precision-crafted beam-cutting light in two sizes. Four adjustable slices offer users versatile and creative lighting effects, perfect for dynamic commercial spaces.

匠心打造的切光燈，提供兩種尺寸選擇。燈體上的四片切片允許使用者自由變化，展現多樣的光影效果，充滿多變性和獨特的創造力。



Matteo

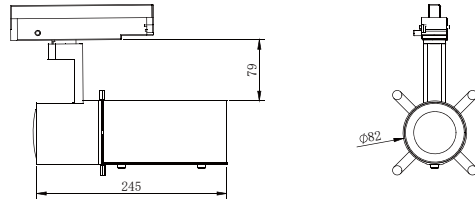
S39

Matteo Series



- 黑色/Black
- 白色/White

線圖/Dimensions



調光控制系統/Dimming Control

定電流
non-dim可控硅
Triac

0-10V



DALI



Aco Smart

規格/Technical Specifications

輸入電壓:100-240V 50/60Hz

LED功率:25W

光通量:1100lm

材質:鋁

光束角:18°-25°

顯示指數:≥90

色溫:2700K/3000K/4000K/雙色溫

Input Voltage:100-240V 50/60Hz

LED Power:25W

Luminous Flux:1100lm

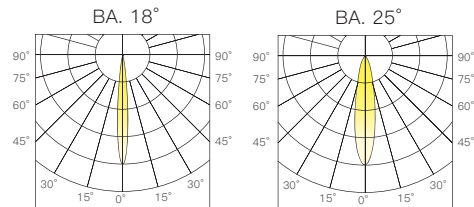
Material:Aluminum

BA.:18°-25°

CRI:≥90

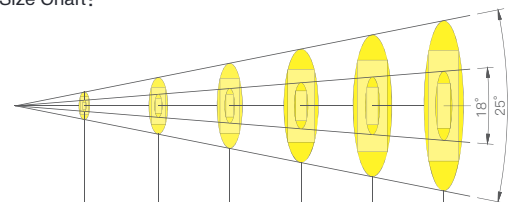
CCT:2700K/3000K/4000K/Tunable

配光曲線圖/Light pattern



BA. 18°			BA. 25°		
H(m)	En(lx)	S(sq.m)	H(m)	En(lx)	S(sq.m)
1	13277	0.1	1	8681	0.1
2	3319	0.3	2	2170	0.5
3	1475	0.8	3	964	1.2
4	829	1.4	4	542	2.1
5	531	2.1	5	347	3.3

光斑尺寸表/Spot Size Chart:



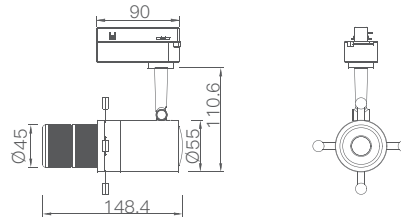
18°Circular spot diameter 18°圓形光斑直徑(m):	1m	2m	3m	4m	5m	6m
18°Square spot side length 18°方形光斑邊長(m):	0.23	0.47	0.69	0.93	1.17	1.36
18°Eav B 18°平均照度(lx):	6089	1522	676	380	243	169
25°Circular spot diameter 25°圓形光斑直徑(m):	0.41	0.82	1.23	1.64	2.05	2.43
25°Square spot side length 25°方形光斑邊長(m):	0.29	0.58	0.87	1.16	1.45	1.72
25°Eav B 25°平均照度(lx):	3850	962	427	240	154	107

切光效果/Lighting effect



S61-3**Matteo Series**

- 黑色/Black
- 灰色/Grey
- 白色/White

線圖/Dimensions**調光控制系統/Dimming Control**定電流
non-dim可控硅
Triac

0-10V



DALI



Aco Smart

規格/Technical Specifications

輸入電壓:100-240V 50/60Hz

功率:12W

光通量:370lm

材質:鋁

光束角:27°-38°

顯示指數:≥90

色溫:2700K/3000K/4000K/雙色溫

Input Voltage:100-240V 50/60Hz

Power:12W

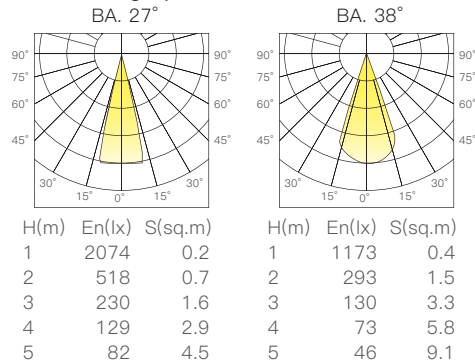
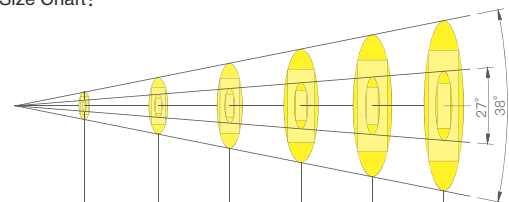
Luminous Flux:370lm

Material:Aluminum

BA.:27°-38°

CRI:≥90

CCT:2700K/3000K/4000K/Tunable

配光曲線圖/Light pattern**光斑尺寸表/Spot Size Chart:**

27°Circular spot diameter 27°圓形光斑直徑(m):	1m	2m	3m	4m	5m	6m
	0.48	0.96	1.44	1.92	2.4	2.88
27°Square spot side length 27°方形光斑邊長(m):	0.34	0.68	1.02	1.36	1.70	2.04
27°Eav B 27°平均照度(lx):	906	226	100	56	36	25
38°Circular spot diameter 38°圓形光斑直徑(m):	0.68	1.36	2.03	2.71	3.39	4.02
38°Square spot side length 38°方形光斑邊長(m):	0.48	0.96	1.44	1.92	2.4	2.84
38°Eav B 38°平均照度(lx):	486	121	54	30	19	13

切光效果/Lighting effect